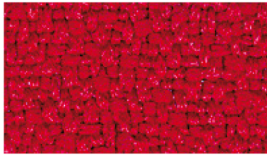
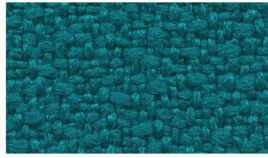


# B

X-TREVIRA | Polyester   



B 079 Rouge Pur



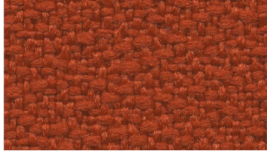
B 160 Vert Canard



B 007 Turquoise



B 378 Magenta



B 066 Rouille



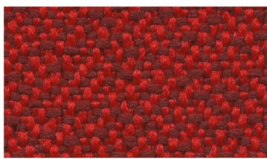
B 703 Vert Bouteille



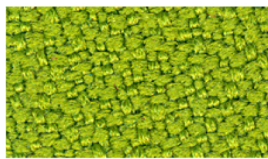
B 082 Bleu Roy



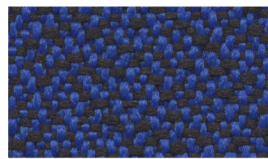
B 500 Violet



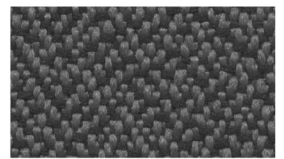
B 244 Rouge Duo



B 188 Vert Pistache



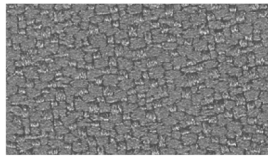
B 268 Bleu Duo



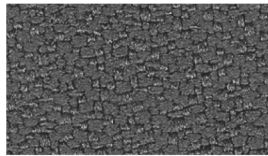
B 289 Gris Duo



B 172 Gris Anthracithe



B 094 Gris



B 081 Gris Moyen



B 009 Noir

Composition	Poids / m <sup>2</sup>	Résistance à l'abrasion	Solidité à la lumière	Résistance au feu	Environnement
100% Polyester Trèvira CS	300 g/m <sup>2</sup>	100 000 cycles	6	EN 1021-1 Cigarette EN 1021-2 Allumette M1 AM18 <sup>(2)</sup> NF D 60013 BS 7176 Medium Hazard	<b>Oeko-Tex EU ECOLABEL</b>

<sup>(2)</sup> Avec une mousse ignifugée type CMHR

# C

GINKGO | PVC



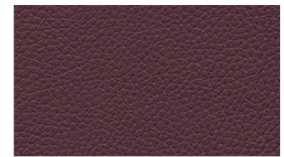
C 80M Jaune Mirabelle



C 8CT Citrouille



C 80G Groseille



C 8QU Quetsche



C 8SE Seigle



C 8TH Menthe



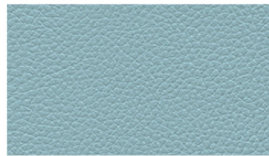
C 8VE Vert



C 8TE Terre



C 8G1 Gris Pierre



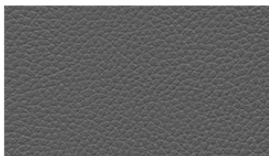
C 8A1 Aigue Marine



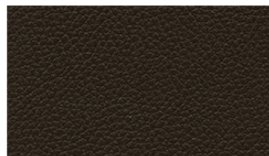
C 8PT Pétrole



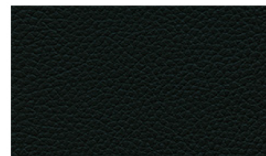
C 80N Bleu Nuit



C 80S Gris Souris



C 80C Chocolat



C 80A Anthracite

Composition	Poids / m <sup>2</sup>	Résistance à l'abrasion	Solidité à la lumière	Résistance au feu	Environnement
85% PVC 15% Coton	830 g/m <sup>2</sup>	150 000 cycles <sup>(1)</sup>	>6	EN 1021-1 Cigarette EN 1021-2 Allumette BS 5852 crib 5 M1 AM18 <sup>(2)</sup>	<b>Sanitized Phtalates free</b>

<sup>(1)</sup> ISO 5470-2

<sup>(2)</sup> Avec une mousse ignifugée type CMHR

# E

CUIR |



KLÜMPEN

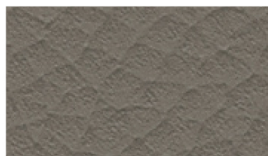
**texpielsa**

ANTICUIR



E CVR

Ivoire



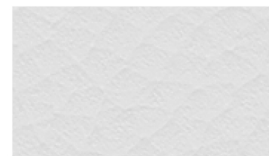
E CTA

Taupe



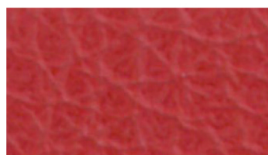
E CHL

Chocolat



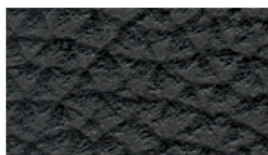
E CCR

Blanc Crème



E CRU

Rouge



E CN0

Noir



E CCA

Caramel



E CGS

Gris

Composition	Epaisseur	Résistance au feu
Cuir vachette fleur corrigée pigmentée	1 à 1,1 mm	EN 1021-1 Cigarette EN 1021-2 Allumette