

TISSUS C :

Acrylique - 270 grs - EN 1021-1 (cigarette)



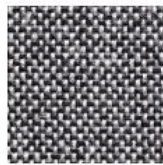
C06



C11



C29



C73

TISSUS K :

Polyester - 350 g/ml - EN 1021-1-2 (cigarette-flamme) - BS 7176 - BS5852 - M1



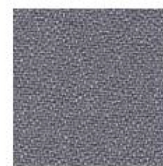
K10



K20



K30



K65

TISSUS Z :

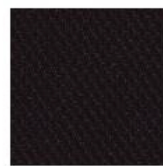
Polyester - 370 g/ml - EN 1021-1-2 (cigarette-flamme) - BS 7176 - BS5852 - M1



Z03



Z08



Z10



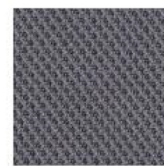
Z20



Z30



Z58



Z65