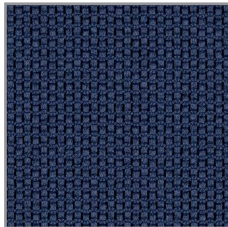
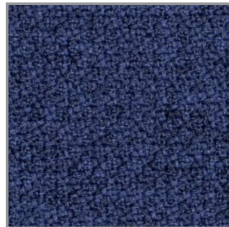


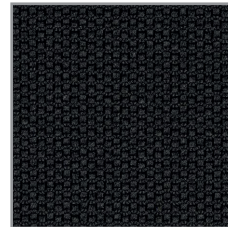
Spin / Step Melange Gabriel



1311 / Spin



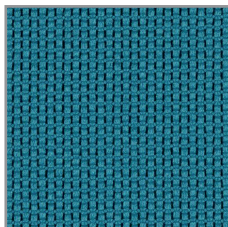
G3 / 5317 / Step Melange



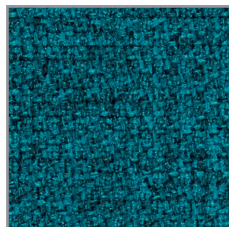
1310 / Spin



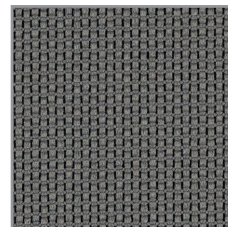
G3 / 5314 / Step Melange



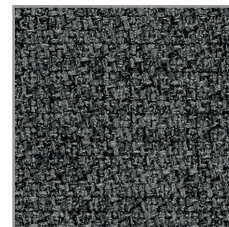
1312 / Spin



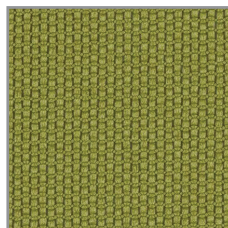
G3 / 5311 / Step Melange



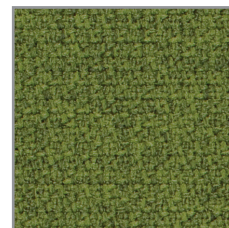
1313 / Spin



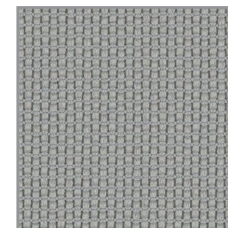
G3 / 5315 / Step Melange



1314 / Spin



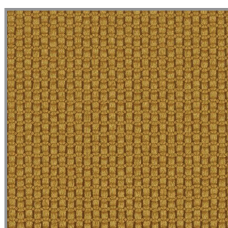
G3 / 5313 / Step Melange



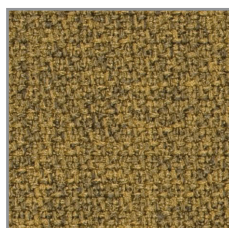
1315 / Spin



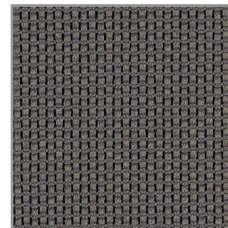
G3 / 5316 / Step Melange



1316 / Spin



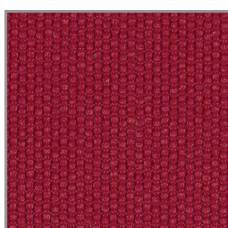
G3 / 5318 / Step Melange



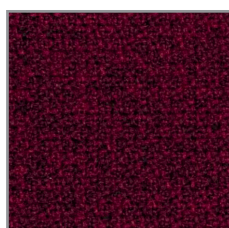
1317 / Spin



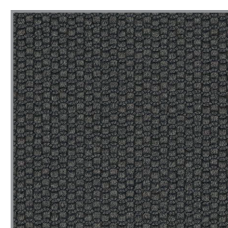
G3 / 5319 / Step Melange



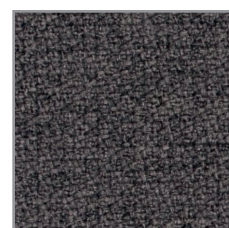
1318 / Spin



G3 / 5328 / Step Melange



1319 / Spin



G3 / 5329 / Step Melange

Empfohlene Farbkombinationen für Toleo mit NetZRücken.
Recommended colour combinations for Toleo with mesh back.
Combinaisons de couleurs recommandées pour Toleo avec dossier maille tendue.
Aanbevolen kleurencombinaties voor Toleo netweave rugleuning.

Spin / Step Melange

Gabriel

Technische Daten

Step Melange	G3	Nummer
		5311, 5313-5319 5328-5329
Material	Trevira CS	100%
Entflammbarkeit	IMO MSC 307(88) Annex 1 part 8, MED Certificate IMO, DIN 4102 B1, NFP 92-503/504/505 M1, BS EN 1021 1&2, BS 5852 Part 1 0,1 Cigarette&match, BS 5852 Crib 5, Class Uno UNI 9175 Class 1 I EMME, ÖNORM B 3825-B1-3800-Q1 UK, FAR/JAR 25.853 (a) (i) (ii), BS 7176 Medium Hazard , AM 18 - NF D 60-013, CA TB 117-2013, DIN EN 13501-1 B-s1,d0 Erfüllt auch andere Feuer-tests, Schwerentflammbarkeit hängt vom verwendetem Schaum ab.	
Gewicht	pro. lf. Meter ca. Gramm	470
Breite	cm	140
Lichtechtheit	Skala 1-8, max. 8 - EN ISO 105 - B02	5-7
Reibechtheit	Skala 1-5, max. 5 - EN ISO 105 X12 (nass / trocken)	4-5/4-5
Scheuerfestigkeit	Scheuertouren Martindale (ISO 12947-2)	100.000
Spin		1310-1319
Material	Trevira CS	100%
	NFP 92-503/504/505 M1, DIN 4102 - B1 Class Uno UNI 8456 UNI 9174, BS EN 1021-1 Cigarette BS EN 1021 1&2 Cigarette and Match BS 5852 Crib 5, CA TB 117-2013 Erfüllt auch andere Feuer-tests, Schwerentflammbarkeit hängt vom verwendetem Schaum ab.	
Gewicht	pro. lf. Meter ca. Gramm	405
Breite	cm	140
Lichtechtheit	Skala 1-8, max. 8 - EN ISO 105 - B02	5-8
Reibechtheit	Skala 1-5, max. 5 - EN ISO 105 X12 (nass / trocken)	4-5/4-5
Scheuerfestigkeit	Scheuertouren Martindale (ISO 12947-2) Abrasionstest Wyzenbeek (ASTM D4157-07)	70.000 100.000
Pilling	Skala 1-5, max. 5 - EN ISO 12945-2	4-5