

Nuancier

Evo

I Groupe de prix

Composition

100% polyester

Poids

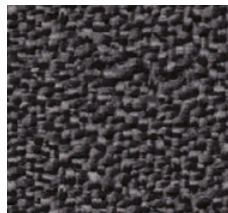
320 g/m²

Certificats

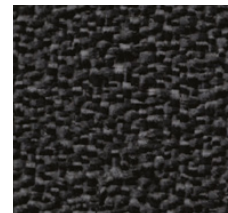
- résistance à l'abrasion - 180000 tours Martindale (BS EN ISO 12947-2)
- boulochage - 5 (PN-EN ISO 12945-2)
- inflammabilité - cigarette (BS EN 1021-1)
- inflammabilité - allumette (BS EN 1021-2)
- résistance à la lumière - 5-6 (EN ISO 105-B02)
- mesure de la teneur en formaldéhyde (PN-EN ISO 14184-1)
- résistance des couleurs aux solvants organiques - 5 (PN-EN ISO 105-X-05)
- résistance des couleurs à la transpiration - 5 (PN-EN ISO 105-E04)
- mesure de la teneur en colorants azoïques (PN-EN 14362-1)
- résistance des couleurs aux frottements - 4-5 (PN-EN ISO 105-X12)
- résistance au glissement - 3 mm, kat. A (PN-EN ISO 13936-2)
- résistance des couleurs aux taches d'eau - 5 (BS EN ISO 105 E16)



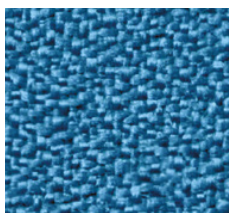
EV-14



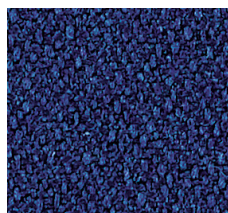
EV-1



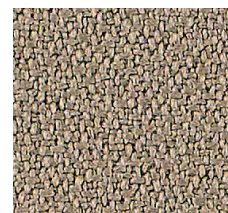
EV-11



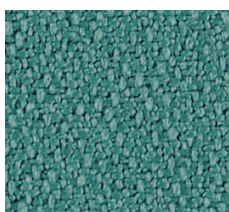
EV-25



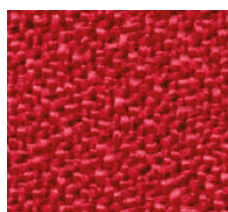
EV-10



EV-2



EV-24



EV-5

Next

I Groupe de prix

Composition

100% polyester

Poids

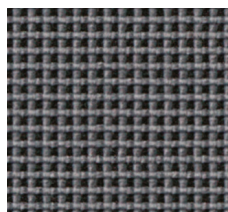
340 g/m²

Certificats

- résistance à l'abrasion - 100000 tours Martindale (PN-EN ISO 12947-2)
- boulochage - 5 (PN-EN ISO 12945-2)
- inflammabilité - cigarette (PN-EN 1021-1)
- inflammabilité - allumette (PN-EN 1021-2)
- résistance à la lumière - 5 (PN-EN ISO 105-B02)



NX-10



NX-12



NX-14



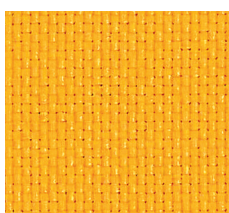
NX-16



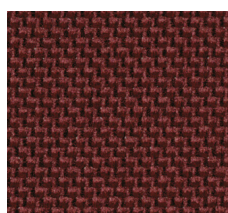
NX-15



NX-11



NX-1



NX-7

Cura

II Groupe de prix

Composition

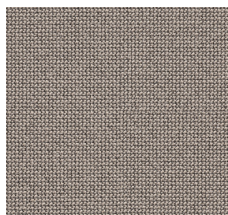
98% post-consumer recycled Polyester / 2% Polyester

Poids

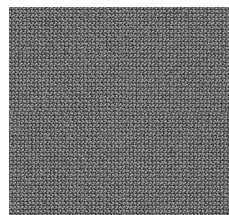
300 g/m²

Certificats

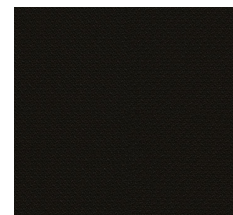
- résistance à l'abrasion - 180000 tours Martindale (EN ISO 12947-2)
- boulochage - 4-5 (EN ISO 12945-2)
- inflammabilité - cigarette (BS EN 1021-1)
- inflammabilité - allumette (BS EN 1021-2)
- résistance à la lumière - 5-8 (EN ISO 105-B02)



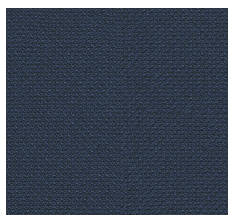
61168



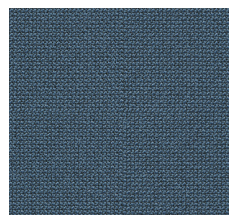
60110



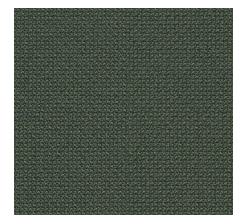
60999



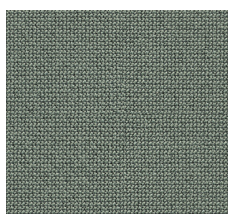
66170



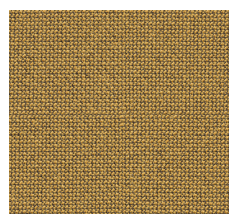
66167



68182



68186



62083

Medley

II Groupe de prix

Composition

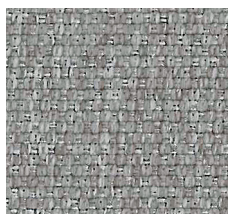
100% polyester

Poids

364 g/m²

Certificats

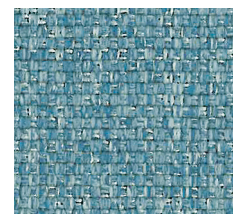
- résistance à l'abrasion - 75000 tours Martindale (EN ISO 12947-2)
- boulochage - 4 (EN ISO 12945-2)
- inflammabilité - cigarette (EN 1021-1)
- inflammabilité - allumette (EN 1021-2)
- inflammabilité (BS 5852 0&1)
- résistance à la lumière - 5-7 (EN ISO 105-B02)



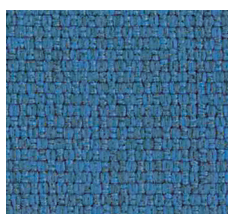
60003



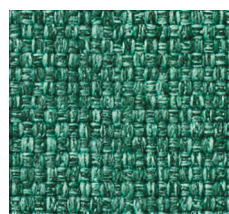
60999



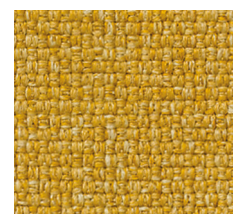
67006



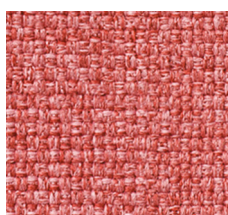
66007



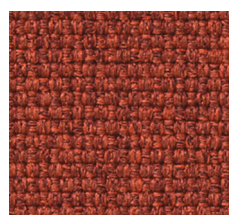
67054



62054



63064



63063

Softline

II Groupe de prix

Composition

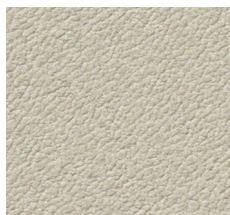
Face enduction - 100% PU
Soporte - 100% coton/EPS

Poids

≥220 g/m²

Certificats

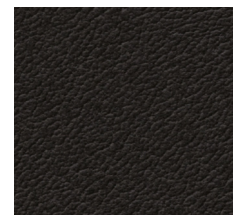
- résistance à l'abrasion - 50000 tours Martindale (PN-EN ISO 5470-2)
- inflammabilité - cigarette (PN-EN 1021-1)



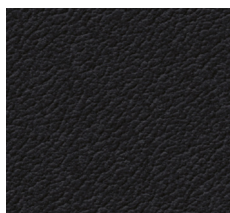
SL-28



SL-16



SL-18



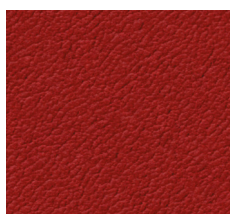
SL-27



SL-21



SL-10



SL-19

Sprint

II Groupe de prix

Composition

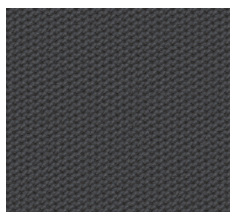
100% polyester

Poids

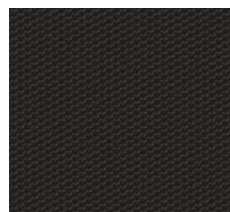
325 g/m²

Certificats

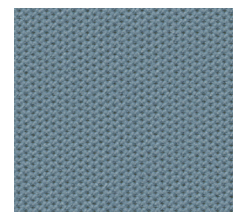
- résistance à l'abrasion - 170000 tours Martindale (BS EN ISO 12947-2)
- boulochage - 4 (BS EN ISO 12945-2)
- inflammabilité - cigarette (BS EN 1021-1)
- inflammabilité - allumette (BS EN 1021-2)
- résistance à la lumière - 5 (BS EN ISO 105-B02)



PS030



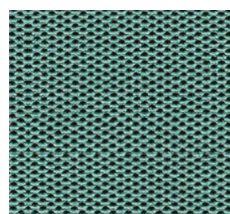
PS004



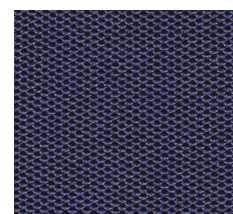
PS039



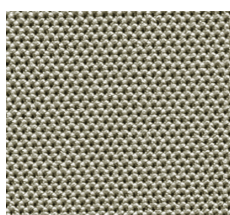
PS040



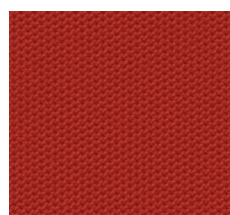
PS041



PS033



PS028



PS010

Valencia™

II Groupe de prix

Composition

Face enduction - 100% vinyle
 Soporte - 100% polyester Hi-Loft 2™

Poids

650 g/m²

Certificats

- résistance à l'abrasion - >300000 tours Martindale (UNE-EN ISO 12947-2)
- inflammabilité - cigarette (EN 1021-1)
- inflammabilité - allumette (EN 1021-2)
- inflammabilité (DIN 4102 B2)
- inflammabilité (NF P 92-503/M2)
- résistance à la lumière - >5 (DIN EN ISO 105-B02)
- résistance aux bactéries (AATCC 147)
- résistance à la moisissure (ASTM G21-02)
- résistance à l'urine
- propriétés antistatiques (ASTM D-257)

PERMABLOK3® est un revêtement de protection en vinyle, ayant fait ses preuves et formant une barrière résistante et efficace contre les problèmes rencontrés dans les services médicaux et dans l'hôtellerie: agents pathogènes, usure et taches. Ce revêtement est invisible mais assure une protection qui se voit par la résistance du produit et ses qualités esthétiques supérieures, allant de pair avec un entretien minimal.

Les pigments/teintures de certains vêtements et accessoires (telles que celles utilisés pour les jeans) peuvent déteindre sur des surfaces plus claires. Ce phénomène s'accroît avec l'humidité et la température, et est irréversible. Producteur n'assume aucune garantie ni responsabilité, ni pour la migration de ces pigments/teintures ni pour l'encrassement permanent causé par ces vêtements / substances.



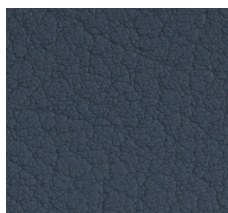
107-4045



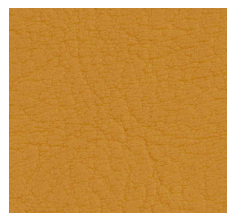
107-4003



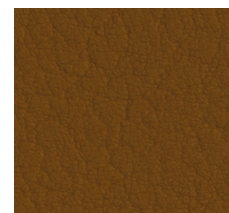
107-9035



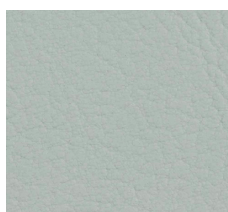
107-4042



107-2116



107-0002



107-2107



107-0034

Velvet

II Groupe de prix

Composition

Face enduction - 100% polyester
 Soporte - 90% polyester, 10% coton

Poids

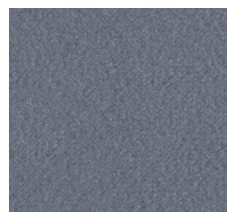
305 g/m²

Certificats

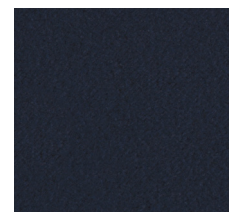
- résistance à l'abrasion - >100000 tours Martindale (EN ISO 12947-2)
- boulochage - 4-5 (EN ISO 12945-2)
- inflammabilité BS 5852 cigarette test
- résistance à la lumière - 4-5 (EN ISO 105-B02)



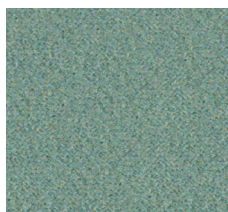
Lavender 71



Niagara 158



Navy 49



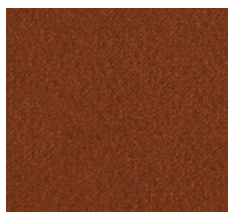
Eucalyptus 193



Emerald 184



Ocre 23



Copper 126



Winered 39

Xtreme

II Groupe de prix

Composition

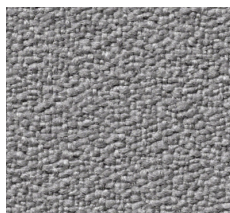
100% polyester recyclé anti-feu

Poids

310 g/m²

Certificats

- résistance à l'abrasion - 100000 tours Martindale (EN ISO 12947-2)
- boulochage - 5 (EN ISO 12945-2)
- inflammabilité - cigarette (EN 1021-1)
- inflammabilité - allumette (EN 1021-2)
- inflammabilité - DIN 4102 B1, BS 5852 Section 4 (Ignition source 5)
- résistance à la lumière - 6 (EN ISO 105-B02)



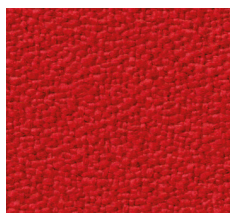
YS094



YS081



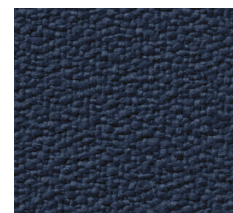
YS009



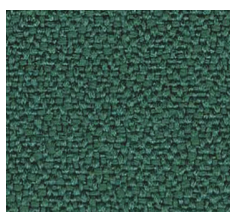
YS079



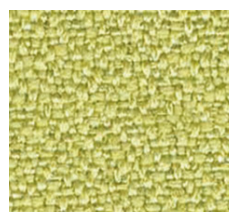
YS136



YS026



YS047



YS096

Oceanic

III Groupe de prix

Composition

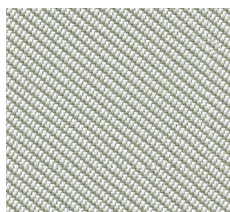
100% post-consumer recycled Polyester,
einschließlich 50% SEAQUAL Garn

Poids

497 g/m²

Certificats

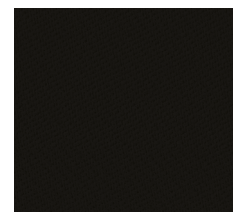
- résistance à l'abrasion - 100000 tours Martindale (EN ISO 12947-2)
- boulochage - 4 (EN ISO 12945-2)
- inflammabilité - cigarette (EN 1021-1)
- inflammabilité - allumette (EN 1021-2)
- résistance à la lumière - 5 (EN ISO 105-B02)



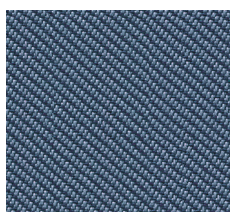
OOC13



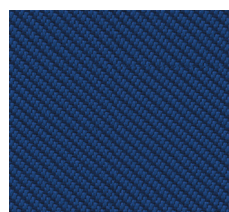
OOC08



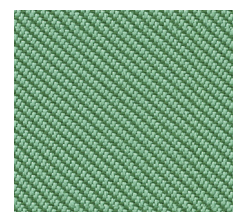
OOC01



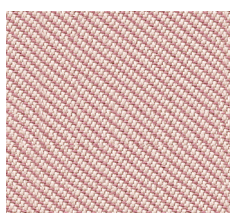
OOC11



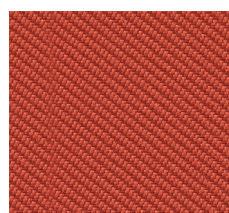
OOC06



OOC04



OOC16



OOC12

Select

III Groupe de prix

Composition

85% laine
15 % polyamide

Poids

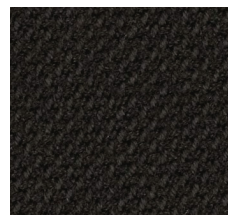
365 g/m²

Certificats

- résistance à l'abrasion - 200000 tours Martindale (EN ISO 12947-2)
- boulochage - 4 (EN ISO 12945-2)
- inflammabilité - cigarette (EN 1021-1)
- inflammabilité - allumette (EN 1021-2)
- inflammabilité BS 5852 Crib 5
- résistance à la lumière - 5-8 (EN ISO 105-B02)



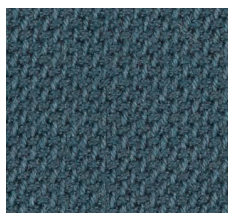
60132



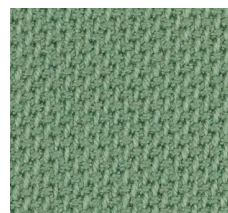
60999



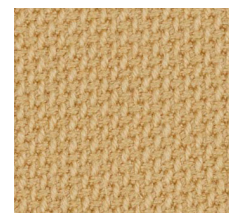
67098



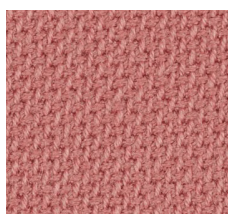
67097



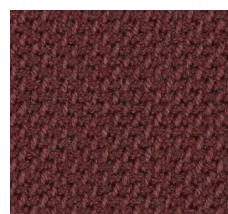
68210



62097



65117



61186

Step

III Groupe de prix

Composition

100% Trevira CS

Poids

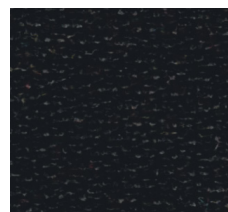
336 g/m²

Certificats

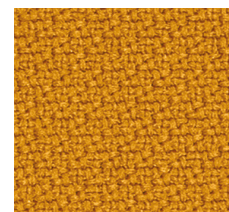
- résistance à l'abrasion - 100000 tours Martindale (BS EN ISO 12947-2)
- boulochage - 5 (BS EN ISO 12945-2)
- inflammabilité - cigarette (DIN EN 1021-1)
- inflammabilité - allumette (DIN EN 1021-2)
- inflammabilité (BS 5852, Crib 5)
- inflammabilité (DIN 4102:B1)
- résistance à la lumière - 7 (EN ISO 105-B02)



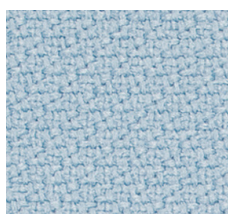
60091



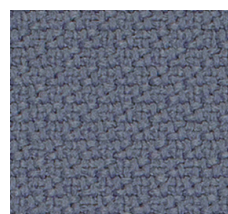
60999



62057



67004



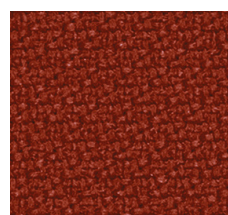
66152



68161



60090



63075

Synergy

III Groupe de prix

Composition

95% laine
5% polyamide

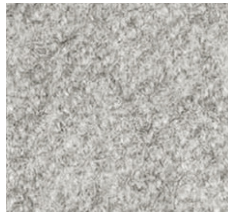
Poids

400 g/m²

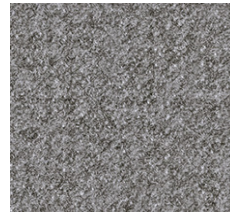
Certificats

- résistance à l'abrasion - 100000 tours Martindale (BS-EN ISO 12947-2)
- boulochage - 4 (BS-EN ISO 12945-2)
- inflammabilité - cigarette (BS-EN 1021-1)
- inflammabilité - allumette (BS-EN 1021-2)
- inflammabilité (UNI 9175 Class 1IM)
- résistance à la lumière - 5 (ISO 105-B02)

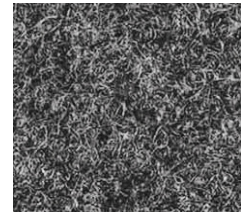
Du fait que le tissu de Synergy est composé à 95% de fibres naturelles, chaque lot présente des différences de teinte qui peuvent être visibles sur les produits lors de commandes séparées. En outre, une caractéristique inhérente à toutes les fibres naturelles est la tendance à un léger boulochage des tissus.



LDS08



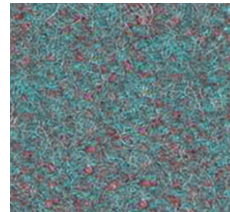
LDS16



LDS17



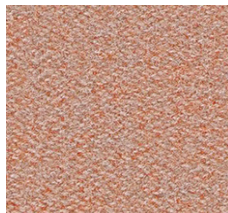
LDS62



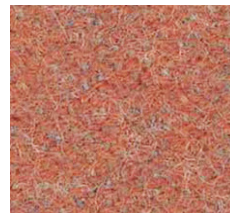
LDS56



LDS49



LDS74



LDS73

Cuir

IV Groupe de prix

Épaisseur

0,8-1,0 mm (+/- 15%)

Certificats

- résistance des couleurs aux frottements (à sec, humide) - 4-5 (PN-EN ISO 11640)
- inflammabilité - cigarette (UNI EN 1021-1)
- inflammabilité - allumette (UNI EN 1021-2)
- résistance à la lumière - 5 (BS EN ISO 105-B02)



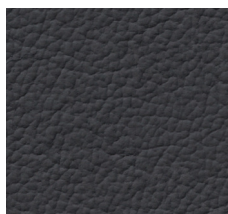
S-28



S-16



S-18



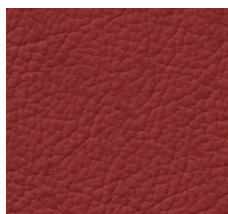
S-27



S-10



S-21



S-19

Cuir Premium

V Groupe de prix

Épaisseur

1,0-1,2 mm

Certificats

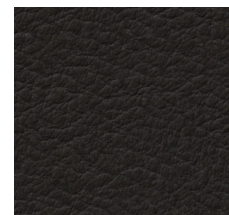
- résistance au déchirement >20 N/mm (DIN 53329)
- résistance aux frottements >4 (DIN EN ISO 11640)
- adhésion du film - 1,5 N/cm (IUF 470)
- résistance à la lumière - 5 (DIN EN ISO 105-B02)
- résistance à la flexion 20 000 (DIN 53351)
- flammabilité (DIN EN 1021 Part I + II)



2875



2760



2900



2180



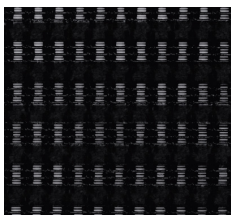
2840



2845

Résille

Action / Ariz



GZ-21

Résille

Bit / Veris



Runner 60061



Runner 60011



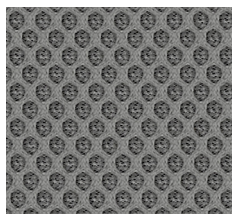
Runner 60999

Résille

LightUp / Xenon Net / Zoo



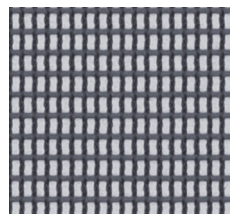
Runner 60061



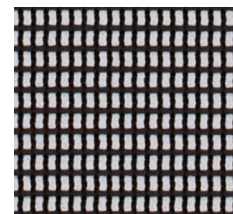
Runner 60011



Runner 60999



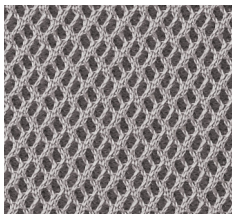
String 60118



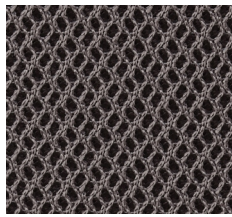
String 60999

Résille

Accis^{Pro} / Violle



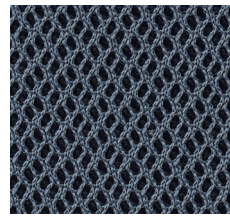
Rhythm 60165



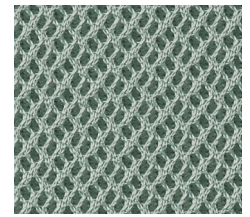
Rhythm 60176



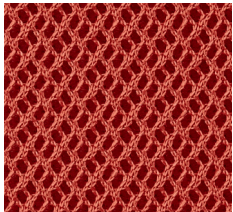
Rhythm 60999



Rhythm 66152



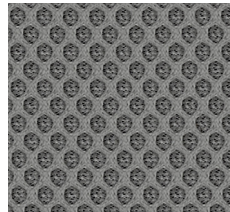
Rhythm 68121



Rhythm 63067



Runner 60061



Runner 60011



Runner 60999

Plastique

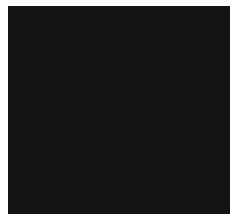
Ariz



CODE 20



CODE 517



CODE 01



CODE 516



CODE 503



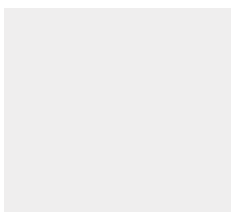
CODE 513



CODE 3020

Plastique

Accis^{Pro} / Ellie^{Pro} / LightUp / Trillo^{Pro} / Violle



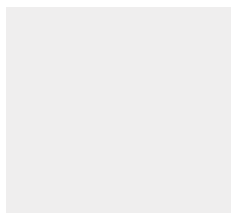
Gris clair (RAL 7047)



Noir

Plastique

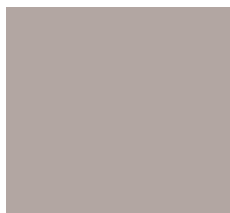
Mickey



Gris clair (RAL 7047)



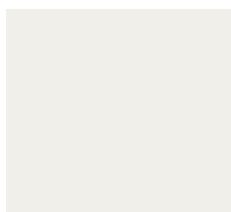
Gris (RAL 7043)



Beige (RAL 7036)

Plastique / piétement

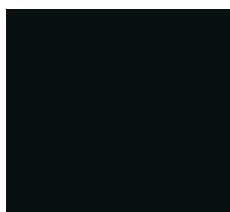
Zoo



Gris clair (NCS S 2500-N)



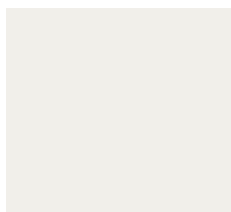
Gris (NCS S 6500-N)



Noir (RAL 9005)

Piétement

Nine / Seven



RAL 9016



RAL 7005



Black



RAL 6034



RAL 1000



RAL 2012

Tôle / piétement

Chic / Chic Air / Chic Lounge / Chic Tables



EPO1



EPO2



EPO3

Piétement

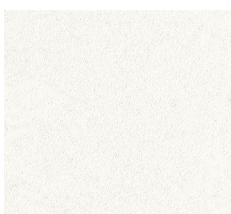
Chic / Chic Air / Chic Lounge / Chic Tables / Ellie^{Pro} / Fan / Nu



EPO6

Frames

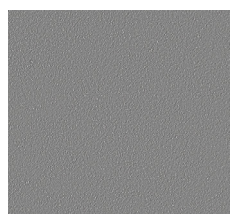
Normo



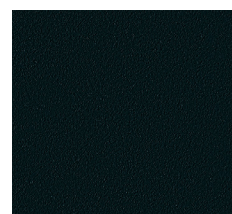
White (RAL 9016)



Lightgrey (NCS S 2500-N)



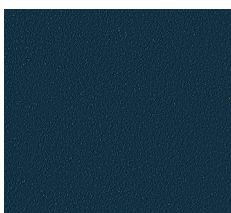
Grey (NCS S 6500-N)



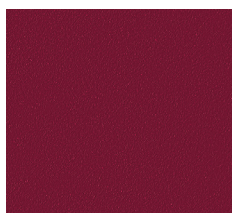
Black (RAL 9005)



Deep green (RAL 6004)



Navy blue (RAL 5003)



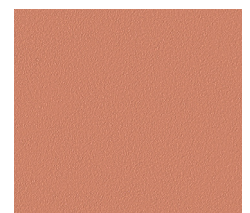
Burgundy (RAL 3005)



Salvia/Green (RAL 6021)



Blue (RAL 5014)



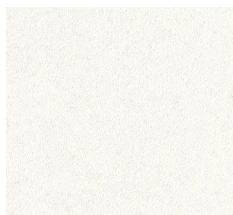
Terracota (RAL 3012)



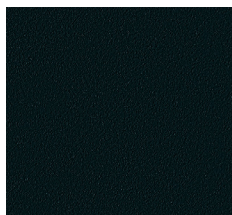
MetallicPro

Frames

Revo Tables



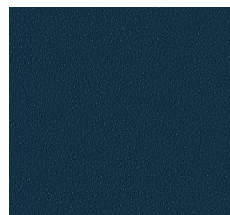
White (RAL 9016)



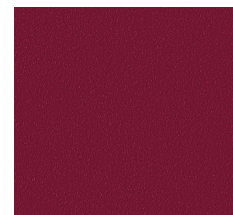
Black (RAL 9005)



Dark green (RAL 6004)



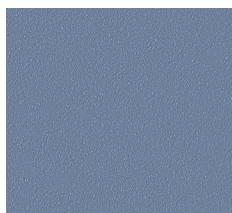
Navy blue (RAL 5003)



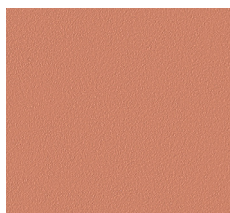
Burgundy (RAL 3005)



Salvia/Green (RAL 6021)



Blue (RAL 5014)



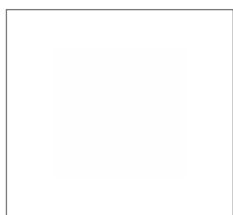
Terracota (RAL 3012)



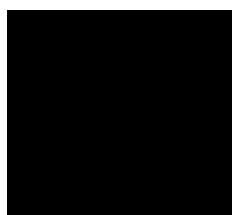
MetallicPro

Verre trempé

Chic Tables



G1 (Dépoli)



G2 (Noir)



G3 (RAL 7044)



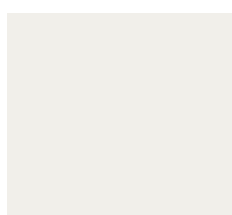
G4 (RAL 7042)

Aluminium

Accis^{Pro} / Violle



Aluminium poli



Blanc (RAL 9016)



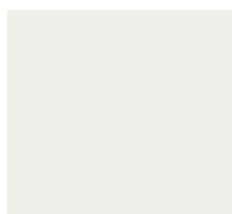
Graphite

Aluminium

Ellie^{Pro} / Trillo^{Pro}



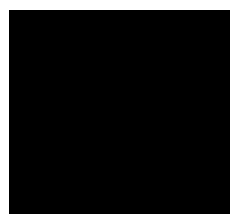
Aluminium poli



Blanc (RAL 9016)



Graphite



Noir

HPL

Com / MyTurn Sofa / SoftBox / Tables SH/SR / Wall In / Zoo



LW01



LW04



LW02

Bois

Chic / Chic Air / Com / Ellie^{Pro} / Nu / October / SoftBox / Tables SW



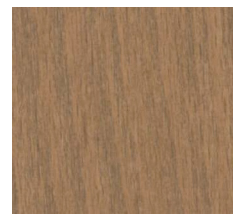
H8



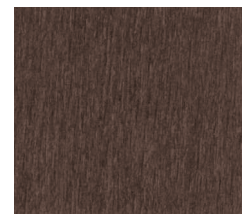
H6



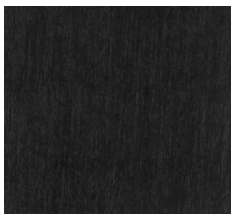
H7



H12



H11



H5

Bois

Fan / Nine



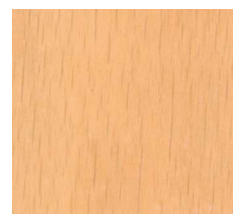
H13



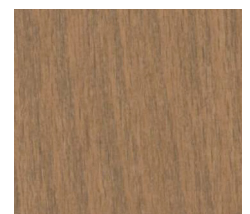
H8



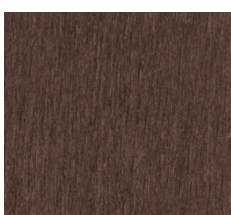
H6



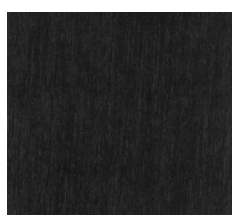
H7



H12



H11



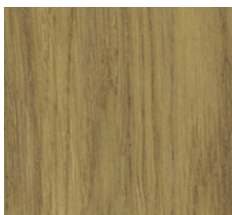
H5

Bois

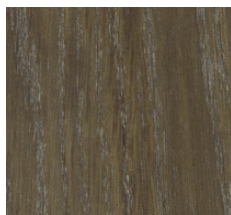
Fan / Tables SW



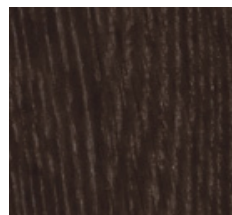
H13



HO6



HO12



HO11

Placages naturellement modifiés

Chic Tables / Com / MyTurn Sofa / Softbox



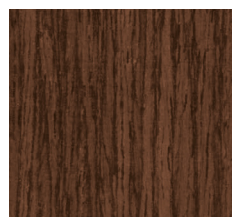
HM10



HM11



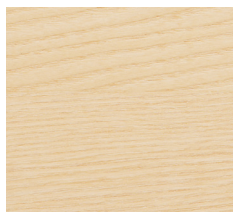
HM12



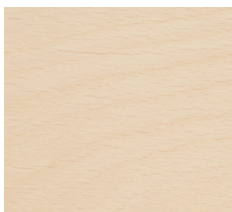
HM20

Natural veneers

Revo Tables



NA (Ash)



NB (Beech)



NO (Oak)



NW (Walnut)

Natural colored veneers (ash)

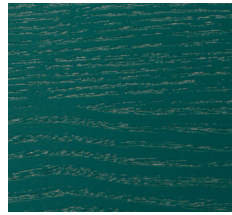
Revo Tables



CNA01 (White)



CNA02 (Black)



CNA05 (Dark green)



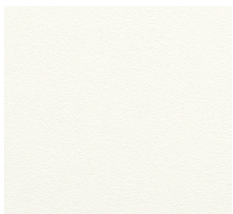
CNA06 (Navy blue)



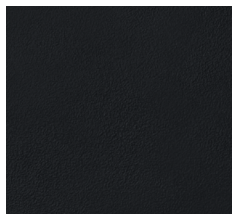
CNA07 (Burgundy)

HPL

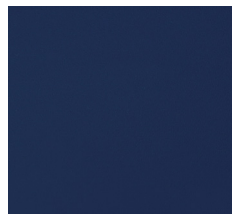
Revo Tables



LW01 (White)



LW02 (Black)



LW06 (Navy blue)



LW07 (Light Burgundy)