

# Navailles®

COLLECTION 2022

REVETEMENTS & FINITIONS

UPHOLSTERY & FINISHES



FABRICS

# Tissus



**Connect** 68229



**Connect** 68230



**Steelcut Trio 3** 946



**Comfort +** 00018



**Rondo** 68224



**Steelcut Trio 3** 0976



**Cura** 68182



**Radio** 7008



**Radio** 6075



**Hallingdal 65** 840



**Cura** 68187



**Rondo** 67112



**Europost 2** 67016



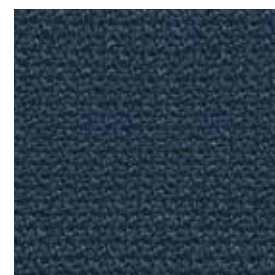
**Steelcut Trio 3** 0746



**Just** 66179



**Just** 66177



**Cura** 66170



**Steelcut Trio 3** 0883

FABRICS

Tissus



Medley 62002



Europost 2 68072



Medley 67002



Steelcut Trio 3 0453



Hallingdal 65 590



Connect 63107



Europost 2 63004



Radio 3082



Radio 4028



Comfort + 64013



Steelcut Trio 3 0686



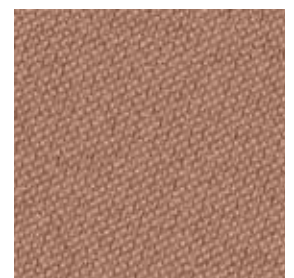
Cura 64013



Rondo 64228



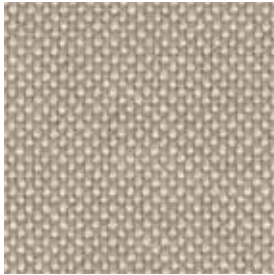
Radio 2524



Just 63094

FABRICS

# Tissus



Hallingdal 65 200



Europost 2 61003



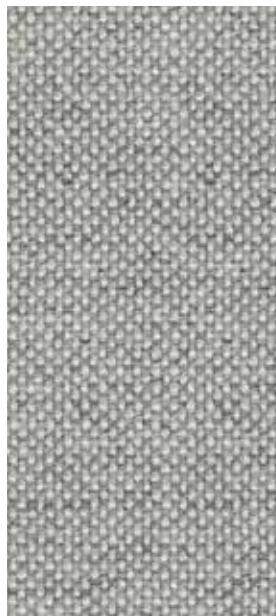
Connect 60146



Rondo 60142



Just 60120



Hallingdal 65 110



Rondo 61201



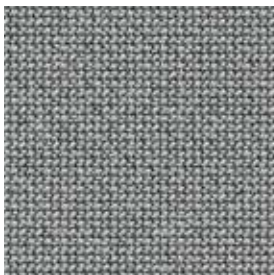
Just 60118



Comfort + 00049



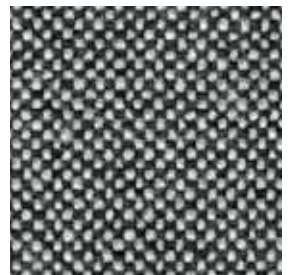
Rondo 60143



Cura 60112



Steelcut Trio 3 0124



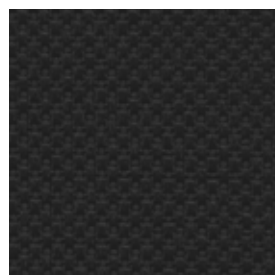
Hallingdal 65 126



Europost 2 60058



Medley 60999



Radio 8033



Cura 60111

LEATHERS

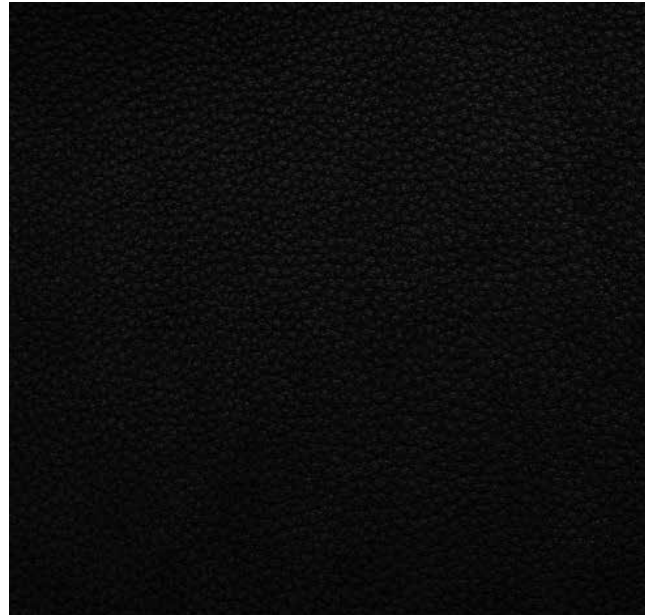
# Cuir

1927  
REMY CARRIAT  
TANNERIE

Cuir tanné minéral, fini pleine fleur aniline. C'est un article naturel et foulonné. La principale caractéristique de cet article est son toucher cireux et doux. Traité anti-tâches en plein bain lors de la teinture, le Socoa est adapté à la fabrication de sièges et à la maroquinerie. Il s'agit de cuirs de tout premier choix sélectionnés par nos soins.



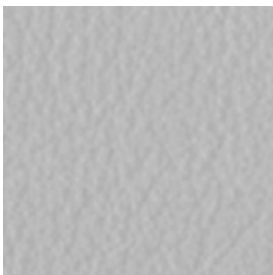
**Carriat** Gold



**Carriat** Noir

---

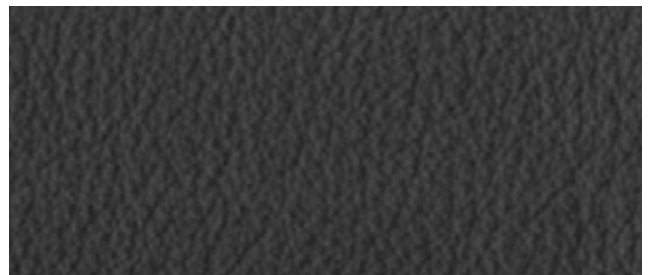
## TEXPIELSA



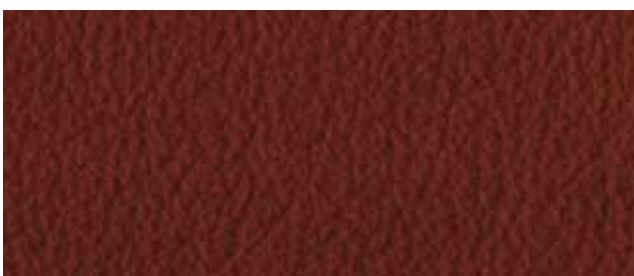
**GEA** Blanco



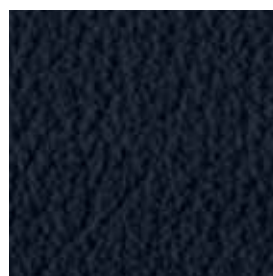
**GEA** Brandy



**GEA** Gris



**GEA** Cognac



**GEA** Marin

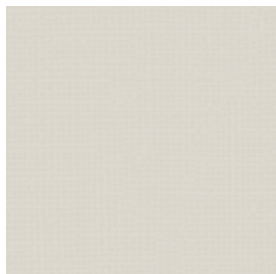


**GEA** Negro

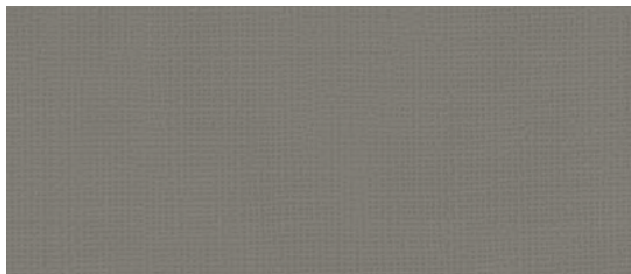
COATED

# Enduits

*Kalytera*



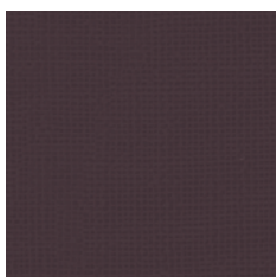
**Calcaire** 011 55 003



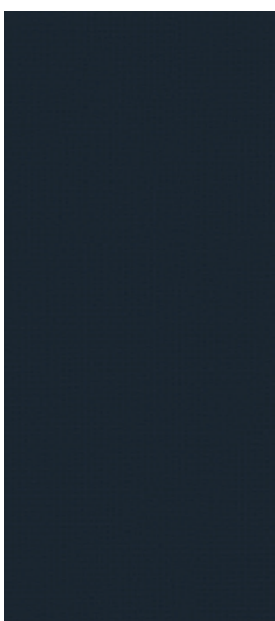
**Zéphyr** 011 55 008



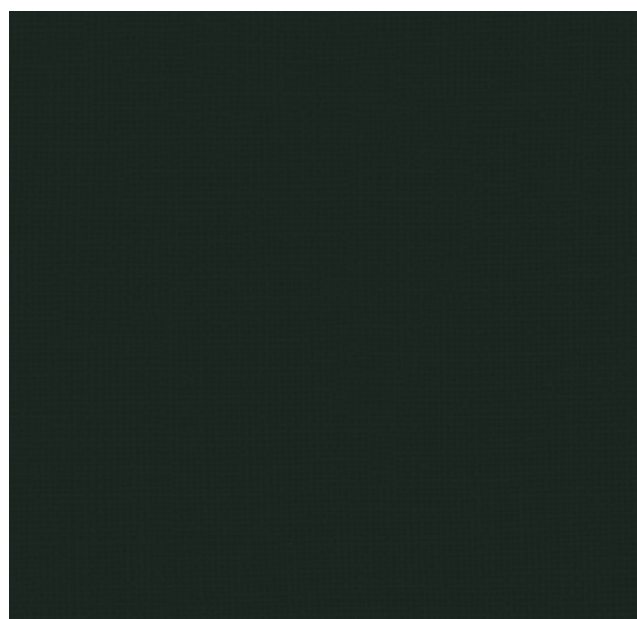
**Paprika** 011 55 007



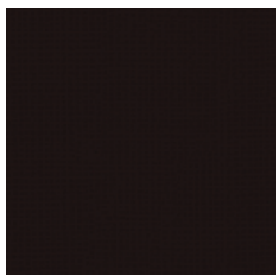
**Figue** 011 55 013



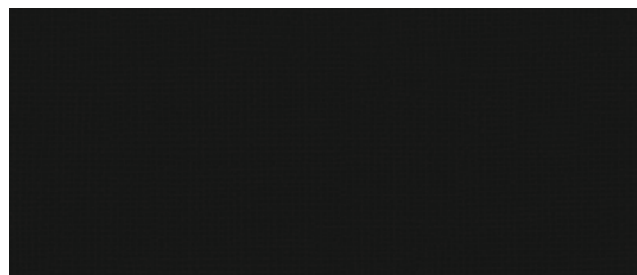
**Minuit** 011 55 011



**Vert Titien** 011 55 001



**Jais** 011 55 012



**Ebène** 011 55 010

# Résilles



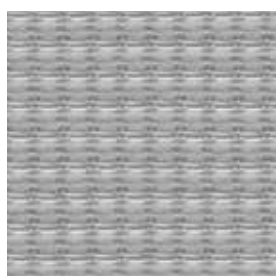
Runner 60061



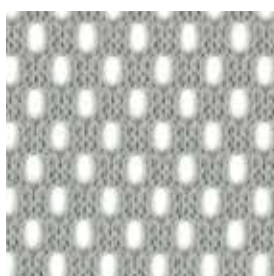
Résille 2D A-185



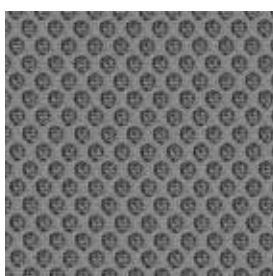
Goal Unito 2-2 1001



Goal Unito 2-2 8043



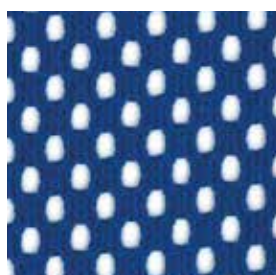
Résille 2D J-176



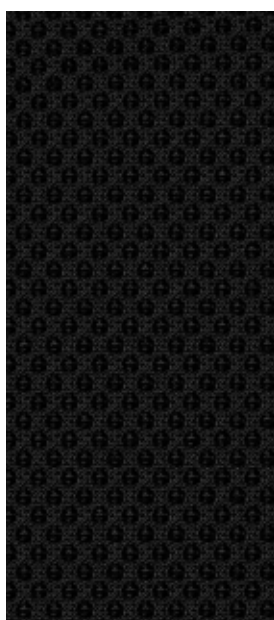
Runner 60011



Goal Unito 2-2 8089



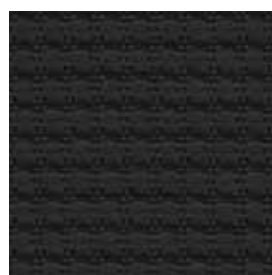
Résille 2D S-321



Runner 60999



Résille 2D 9



Goal Unito 2-2 8033



Runner 66120



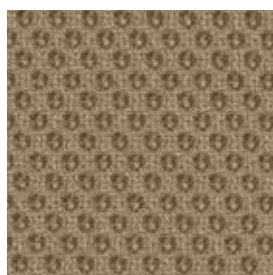
Runner 66123



Runner 68110



Résille 2D P-013



Runner 61110



Runner 64089

TECHNICAL INFORMATION

# Informations techniques

|                                   |   | COMPOSITION   | RÉSISTANCE À L'ABRASION<br>TEST DE MARTINDALE | NF EN 1021-1 (Cigarette) ou<br>BS 5852 - Source 0 | NF EN 1021-2 (Allumettes) ou<br>BS 5852 - Source 1, 2, 3 | Classement M<br>NF P 92_503 | Certification Oeko-Tex** | Label Second Nature*** |
|-----------------------------------|---|---|---|---|--|-----------------------------|--------------------------|------------------------|
| <b>Groupe 1</b><br><i>Group 1</i> | <b>RADIO</b><br>Fidivi                          | 100% Polyester FR   | 80 000 tours                                  | •   | •  | M1                          |                          |                        |
| <b>Groupe 2</b><br><i>Group 2</i> | <b>JUST</b><br>Gabriel                          | 98% post-consumer recycled polyester<br>2% polyester                | 70 000 tours                                  | •   | •  |                             | •                        |                        |
|                                   | <b>CURA</b><br>Gabriel                          | 98% post-consumer recycled polyester<br>2% polyester                | 100 000 tours                                 | •   | •  |                             | •                        |                        |
|                                   | <b>RONDO</b><br>Gabriel                         | 99% post-consumer recycled polyester<br>1% polyester                | 70 000 tours                                  | •   | •  |                             | •                        |                        |
|                                   | <b>KALYTERA</b><br>Cotting Group                | PVC 85 %<br>Cotton 15 %   | 150 000 tours                                 | •   | •  | M1                          |                          |                        |
| <b>Groupe 3</b><br><i>Group 3</i> | <b>MEDLEY</b><br>Gabriel                        | 100% polyester  | 75 000 tours                                  | •   | •  |                             | •                        |                        |
|                                   | <b>CONNECT</b><br>Gabriel                       | 48% New Zealand wool,<br>41% post-consumer rec pes<br>9% pa, 2% pes | 100 000 tours                                 | •   | •  |                             | •                        |                        |
| <b>Groupe 4</b><br><i>Group 4</i> | <b>EUROPOST 2</b><br>Gabriel                    | 100% New Zealand wool   | 50 000 tours                                  | •   | •  |                             | •                        |                        |
| <b>Groupe 5</b><br><i>Group 5</i> | <b>COMFORT +</b><br>Gabriel                     | 88% polyester/12% polyurethane                                      | 90 000 tours                                  | •   | •  | M3                          | •                        |                        |
|                                   | <b>GEA</b><br>Texpiel                           | Cuir  | -   |   |  |                             |                          |                        |
| <b>Groupe 6</b><br><i>Group 6</i> | <b>STEELCUT TRIO 3</b><br>Kvadrat               | 90% new wool worsted 10% nylon                                      | 100 000 tours                                 | •   | •  |                             |                          | •                      |
|                                   | <b>HALLINGDAL 65</b><br>Kvadrat                 | 70% new wool 30% viscose  | 100 000 tours                                 | •   | •  |                             |                          | •                      |
|                                   | <b>CUIR CARRIAT</b><br>Tannerie<br>Rémy CARRIAT | Cuir  | -   |   |  |                             |                          |                        |
| <b>Résilles</b><br><i>Fishnet</i> | <b>RÉSILLE 2D</b><br>Fidivi                     | 100 % Polyester   | 60 000 tours                                  | •   | •  |                             |                          |                        |
|                                   | <b>GOAL UNITO 2-2</b><br>Gabriel                | 100 % Polyester Sulfone   | 100 000 tours                                 | •   |  |                             |                          |                        |
|                                   | <b>RUNNER</b><br>Gabriel                        | 100 % Polyester   | 75 000 tours                                  | •   | •  |                             | •                        |                        |